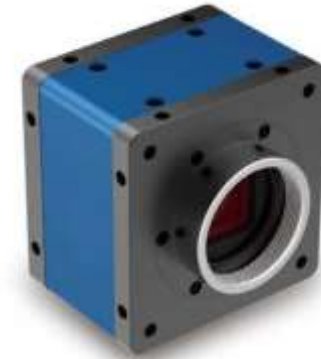


hVI M Series Industrial Camera

Basic Parameters

Camera	
Image Formats	Mono8 ¹⁾ , Bayer8 ²⁾
Interface	GigE (1000Mbit/s)
Synchronicity	Via external trigger, software trigger or free running
Camera internal processing	External trigger for anti-shake function, hotspot fix, lookup table
Machinery / Electronics	
Dimensions	50mm x 50mm x 35mm
Operating temperature	0°C~50°C
Lens mount	C mount
Flash Sync	Two photocoupler
External trigger	Two photocoupler
Power supply	12VDC(±10%) 12-pin Hirose connector
Weight	~145g
Software	
Driver	SDK or GigE Vision Standard
Operating system	Windows XP, Win7, 32bit 和 64bit
Compatibility	GigE Vision, GenICam, GenTL



Features:

- High resolution
- Large Pixel Size
- High Frame Rate
- External trigger and flash synchronization

Applications:

- Semiconductors & components inspection
- Manufacturing quality control
- Food and Beverages inspection
- Packaging Industry
- Pharmaceutical Industry
- Intelligent Transportation System
- Microscope
- Medicine & life science

Note : 1) only for mono models ; 2)only for color models

Specification

Model	Type	Resolution	Sensor Size	Pixel Size μm	Frame Rate Fps ^d	Bit depth	Shutter	Color	Power Consumption
hVI-M-0801DM/C	CCD	3312 x 2496	1"	3.88	14.0	8	global	Mono / Color	4.5w
hVI-M-1201SM/C	CCD	4088 x 3072	1"	3.10	8.3	8	rolling	Mono / Color	2.0w
hVI-M-0201SC	CMOS	1920 x 1080	1/2"	3.75	40	12/8	rolling	Color	
hVI-M-0401SM	CMOS	2048 x 2048	1"	6.5	21.5	12/8	rolling	Mono	
hVI-M-0501SM/C	CMOS	2464 x 2056	2/3"	3.45	24	12/8	global	Mono / Color	
hVI-M-0901SM/C	CMOS	4112 x 2167	1"	3.45	13.6	12/8	global	Mono / Color	
hVI-M-1202SM/C	CMOS	4112 x 3008	1"	3.45	9.9	12/8	global	Mono / Color	
hVI-M-2001SM/C	CMOS	5544 x 3694	1"	2.4	5.9	12/8	rolling	Mono / Color	

Installation

